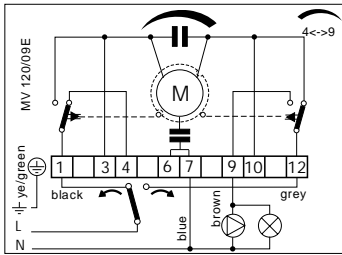


TECHNICAL DATA

Factory connection



Power supply	230 V, 50 Hz, 3.5 W
Rotation angle	90°
Rotation time for 90°	210s, 105s
Output torque	6 Nm
Protection degree	IP 55
El. motor insulation class	120°
Ambient temperature	0 ... 55 °C
Microswitch rating	5(1)A, 250 VAC
Connection cable length	5x0.75 mm ² , L=1500 mm

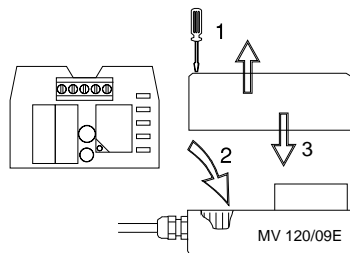
ELECTRIC CONNECTION execute according shown wiring diagram.

ON/OFF CONTROL OF ACTUATOR: with room thermostats which has changeover type of output.

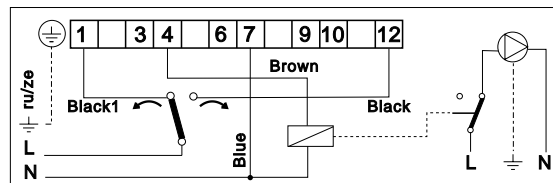
POSITIONING CONTROL: all type of three point controllers with or without outside compensated temperature control.

ADDITIONAL EQUIPMENT - RELE MODUL RM 24

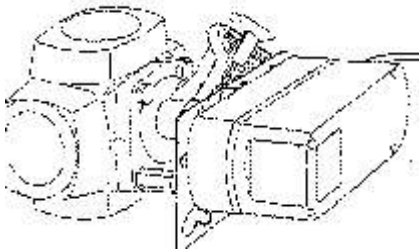
In case of controlling actuator by thermostat is recommended, that you connect the pump over standstill contact outside relay which disconnct the pump when the mixing valve is closed.



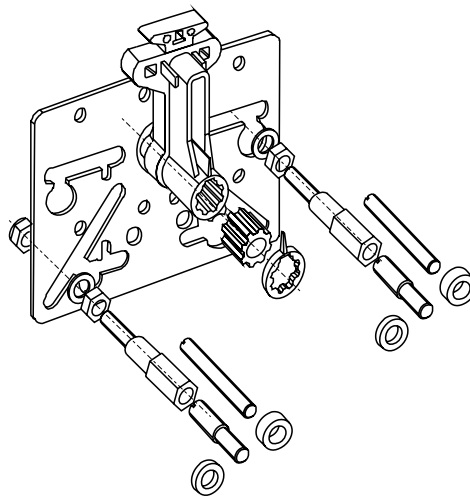
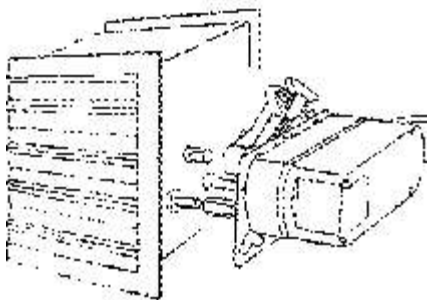
Relay module RM 24 is necessary to built in in case of controlling the actuator with the room thermostat with one working (standstill) contact SPST. Functionaly is RM 24 input relay for the actuator and output relay for the pump.



ACTUATOR WITH MIXING VALVE



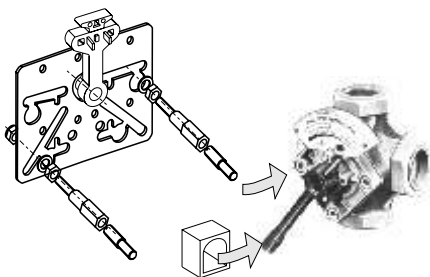
ACTUATOR WITH VENTILATION FLAP



Standard adapters for mounting on mixing valves:

FIRŠT Rotomix F3 in F4, ACASO, Landis&Gyr, Besser, IKA, V.I.L.B., Meibes, Termomix, Besser, MUT, FIRŠT Rotomix MSVA, MSVBA, Ferrotherm, ESBE, IMP, IMT, Honeywell LŽ, Sauter, Centra (ZRK), API, Danfoss, Tekmar, TEM, Barberi

By special orders we supply adapters for folowing mixing valves: Viessmann, Centra, V.I.L.B., TVT-STADLER, Honeywell (medeninasti), Vailant, VITA, Meibes, AEG, IKA, Caleffi, MUT 1000, ...



Example of mounting the actuator on mixing valve IKA.

The handle of the valve is not replaced, but it remains original. The valve handle adapter is put on it.

It is the same for valves Viessmann.

FIRŠT-ROTOTEHNIKA, s.p., Radegunda 54, SI-3330 Mozirje, SLOVENIJA
tel: +386 3 898 35 00, fax:+386 3 898 35 35, e-mail:info@first.si, http://www.first.si