

Manual motor starter LMS25 up to 25A



11 LMS 25

Setting range of thermal trip ❶	UL maximum horsepower ratings						Catalog number	Price
	Single-phase ❷		Three-phase					
[A]	120V [HP]	240V [HP]	200V [HP]	240V [HP]	480V [HP]	600V [HP]		\$ each
0.1-0.16	–	–	–	–	–	–	11 LMS25 016T	85.00
0.16-0.25	–	–	–	–	–	–	11 LMS25 025T	85.00
0.25-0.4	–	–	–	–	–	–	11 LMS25 04T	85.00
0.4-0.63	–	–	–	–	–	–	11 LMS25 063T	85.00
0.63-1	–	–	–	–	–	1/2	11 LMS25 1T	85.00
1-1.6	–	–	–	–	3/4	3/4	11 LMS25 1V6T	85.00
1.6-2.5	–	1/6	1/2	1/2	1	1 1/2	11 LMS25 2V5T	85.00
2.5-4	1/8	1/4	3/4	1	2	3	11 LMS25 4T	85.00
4-6.3	1/4	1/2	1 1/2	1 1/2	3	5	11 LMS25 6V3T	85.00
6.3-10	1/2	1	2	3	5	7 1/2	11 LMS25 10T	100.00
10-16	1	2	3	5	10	10	11 LMS25 16T	100.00
16-20	1	3	5	5	10	15	11 LMS25 20T	102.00
20-25	2	3	5	7 1/2	15	20	11 LMS25 25T	132.00

❶ The appropriate thermal trip range of the manual starter should be selected on the basis of the motor nameplate full-load current since the horsepower ratings given in the table are for reference only.

❷ Single-phase horsepower ratings are based on wiring the three poles in series.

General characteristics

The LMS25 manual motor starter is particularly suitable for controlling small operating machines.

Releases and auxiliary contacts make it also suitable for more complex uses.

Wall and flush-mount enclosures allow to install the LMS25 starter in the most disparate environmental conditions (dust, humidity, aggressive environmental agents, etc.).

Operational characteristics

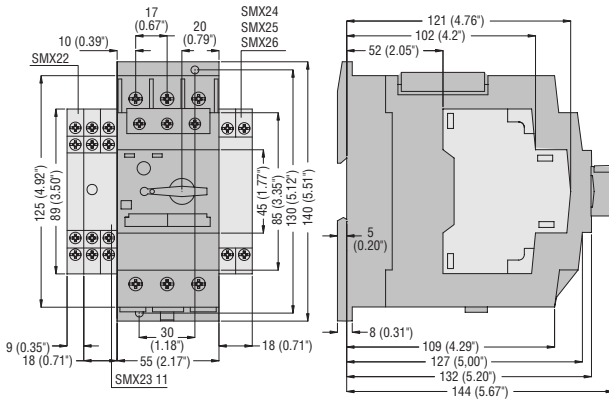
- Rated insulation voltage U_i : 690V
- Rated impulse voltage: 6kV
- Rated frequency: 50/60Hz
- Maximum rated current: 25A
- Number of adjustment ranges: 13 (0.1 to 25A)
- Power dissipation per phase: 2-15W
- Magnetic tripping: 12 In max
- Thermal tripping time class: 10
- Utilization category: A
- Single-phase sensitive
- Trip free
- Mechanical life: 100,000 cycles
- Electrical life 25A (AC3): 100,000 cycles
- Mounting on 35mm DIN rail (IEC/EN 60715) or screw fixing
- Mounting position: Any
- Degree of protection: IP20.

Certifications and compliance

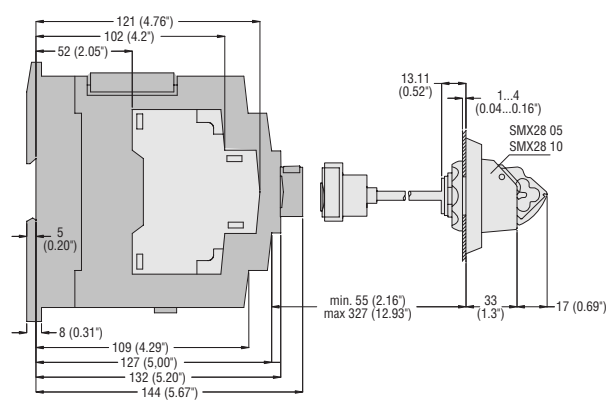
UL listed for USA and Canada, file E155982.

Compliant with standards: IEC/EN 60947-1, IEC/EN 60947-2, IEC/EN 60947-4-1.

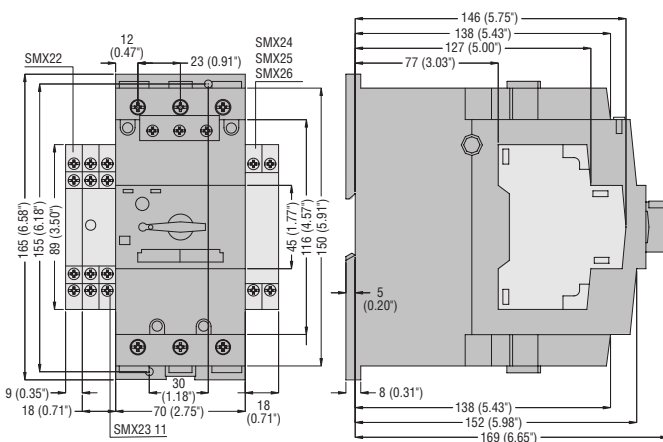
Manual starters SM2A
with side-mount SMX2... blocks



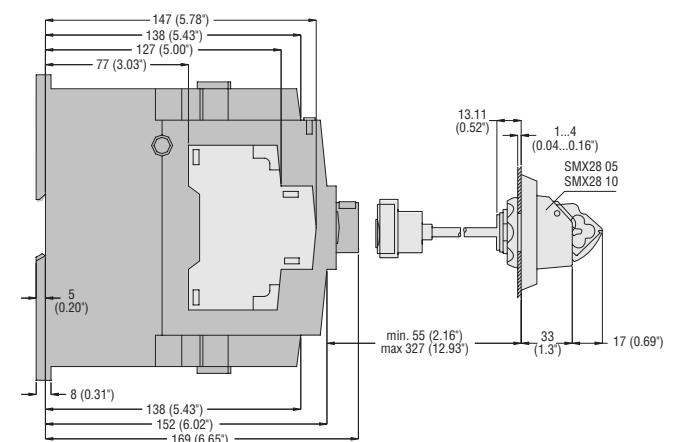
SM2A
with SMX28 05 or SMX28 10 handle



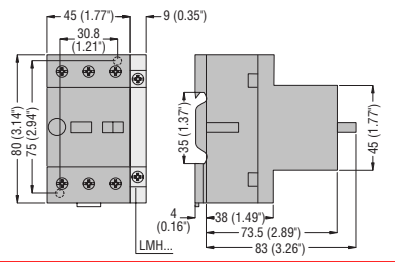
Manual starters SM3A
with side-mount SMX2... blocks



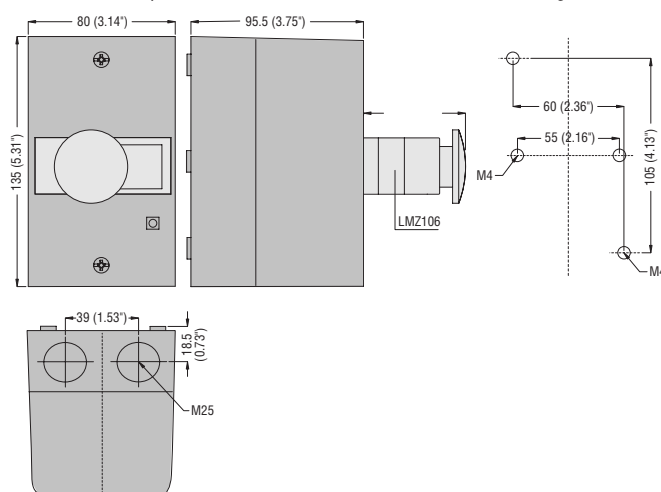
SM3A
with SMX28 05 or SMX28 10 handle



Manual starters LMS25
with side-mount LMH contacts



Enclosures LMZ111 - LMZ112
with LMZ106 stop button



Fixing axis and drillings

LMZ113 - LMZ114
with LMZ106 stop button

